

Theory Sheet One – *Musical Terms and Notes*

The diagram illustrates four fundamental musical notation elements. At the top, a set of five horizontal lines is labeled 'Staff'. Below this, the 'Treble Clef' is shown as a stylized G-clef. The 'Bass Clef' is shown as a stylized F-clef. At the bottom, a 'Bar Line' is depicted as a vertical line intersecting two sets of five horizontal lines.

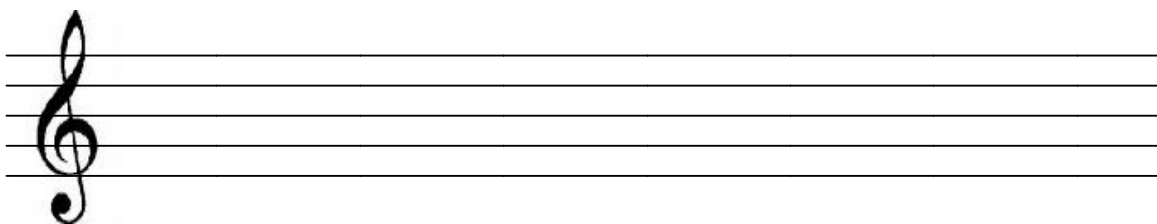
The Basic notes of the right hand

A musical staff with a treble clef. Five notes are placed on the staff: C (first space), D (second space), E (third space), F (first line), and G (second line). Each note is a solid black dot with a vertical stem extending downwards.

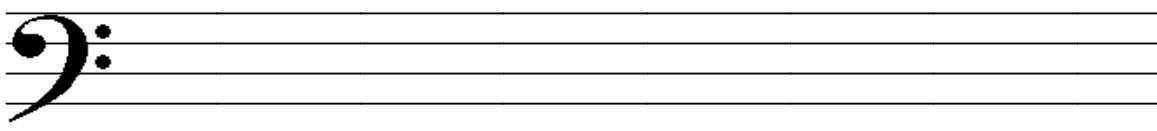
The Basic notes of the left hand

A musical staff with a bass clef. Five notes are placed on the staff: C (first space), D (second space), E (third space), F (first line), and G (second line). Each note is a solid black dot with a vertical stem extending downwards.

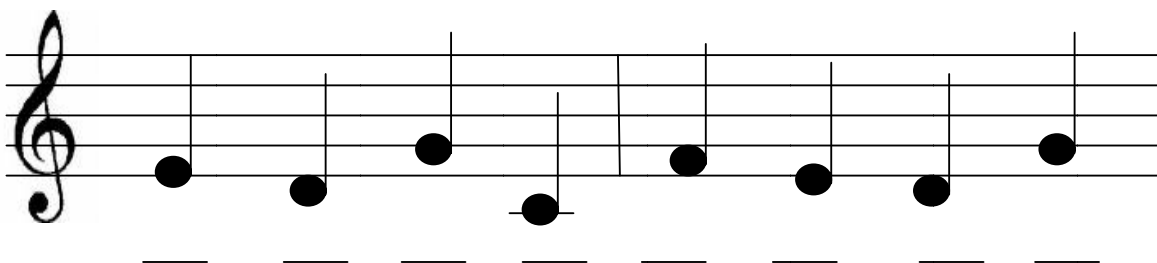
1. **Treble Clef Practice.** See if you can draw a treble clef next to the one pictured.



2. **Bass Clef Practice.** See if you can now draw your own bass clef next to the one pictured.



3. **Name these right hand notes:**



4. **Name these left hand notes:**

