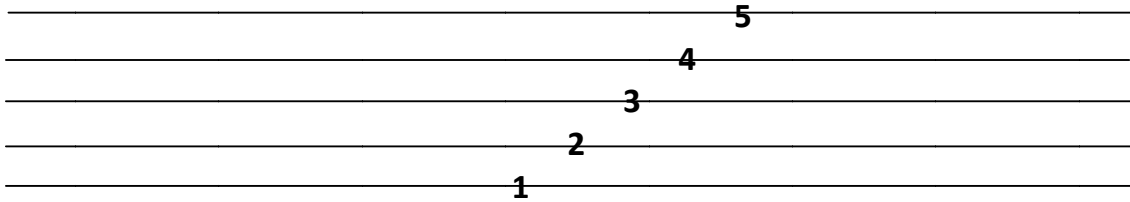


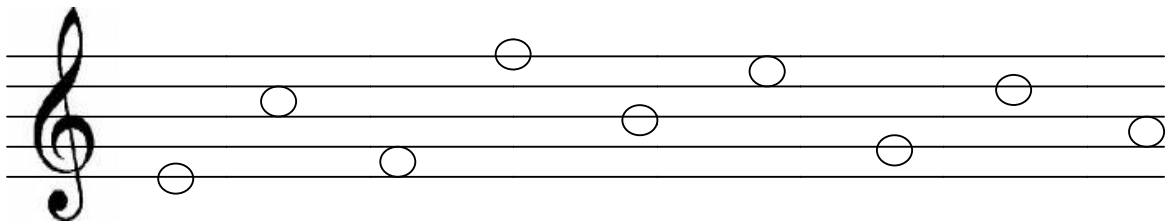
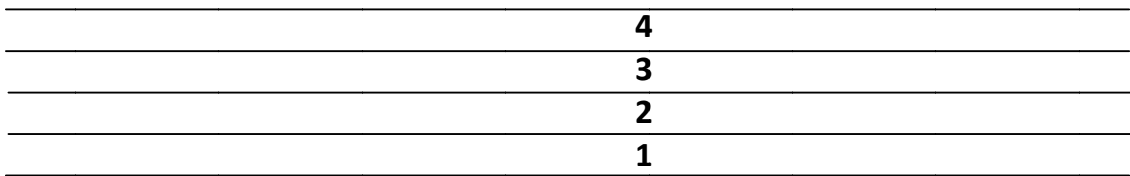
Theory Sheet Five: *Lines and Spaces*

A Staff is made up of 5 lines and 4 spaces. It is what our music notes are written on.
(Hint: To remember the word staff, think of the place the teachers go to at recess and lunch time)

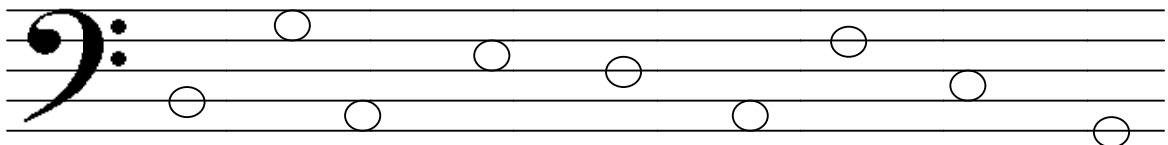
5 Line Notes



4 Space Notes



1. Draw a circle around all the line notes
2. How many line notes are there above?



3. Draw a square around all the space notes
4. How many space notes are there?